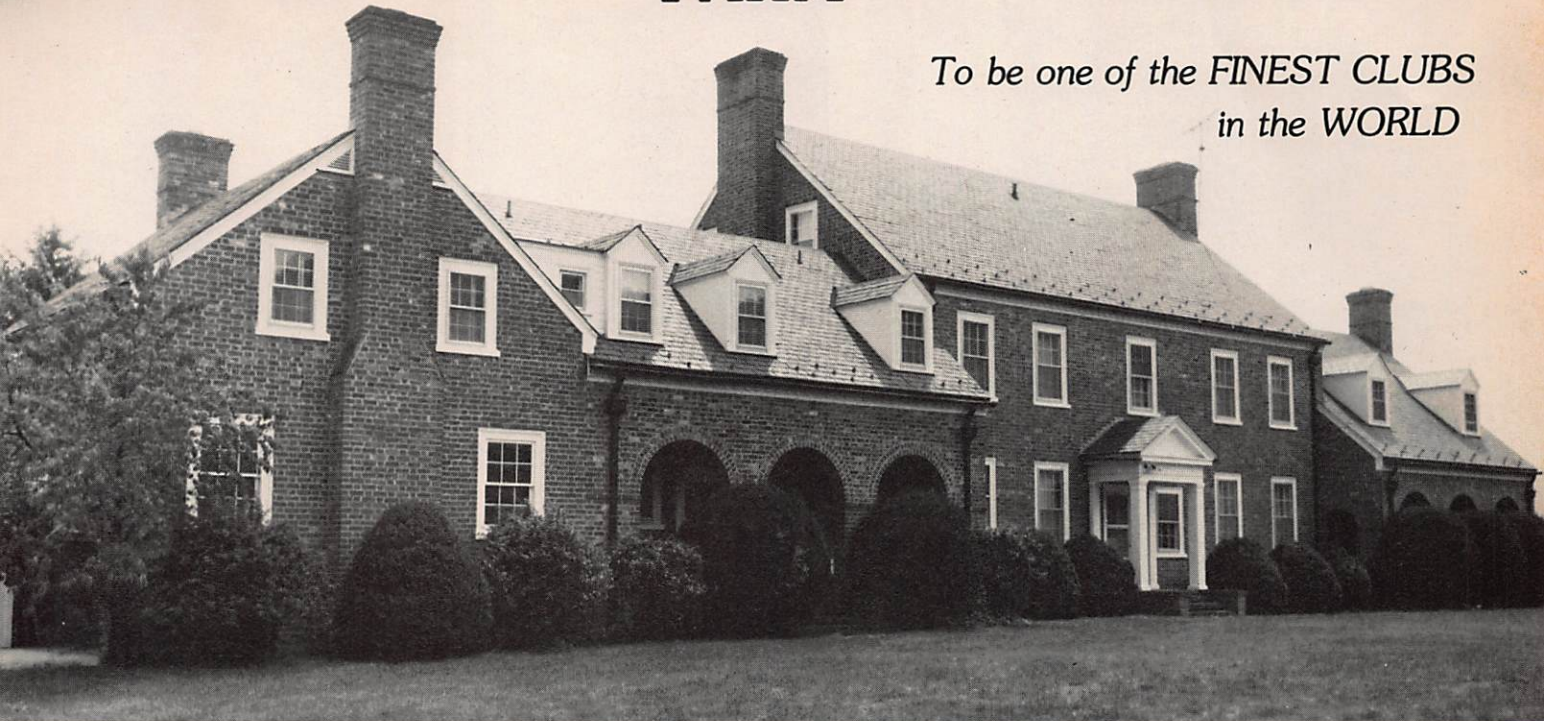


# AVIATION GOLF and COUNTRY CLUB FARM

To be one of the *FINEST CLUBS*  
in the *WORLD*



The Aviation Golf & Country Club overlooks the Lake of the Pines, the Championship Golf Course, and ranges of mountains. Such patriots as Thomas Jefferson, James Monroe, Robert E. Lee, and others were regular visitors at the Bath Alum Hotel, en route to the Warm Springs Baths. The bricks from the famous hotel, built in 1740, were used to build our Club House.

## BOARD OF GOVERNORS

- Major Terrill Brazelton**  
A Virginia Farmer, Former Investment Banker  
and a Foreign Trade Advisor.  
Millboro, Virginia 24460
- Colonel Willard G. Plentl**,  
Director, Division of Aeronautics  
Commonwealth of Virginia  
Richmond, Virginia 23231
- Henry L. Ravenhorst, A.I.A.**  
Dean of Architecture and teaches Architecture &  
Engineering at Washington & Lee University  
Lexington, Virginia 24450
- Harold K. St. Clair**, Attorney at Law  
Commonwealth Attorney  
Covington, Virginia 24426
- William A. Whittle**  
Chief of Washington Airports  
Federal Aviation Administration (FAA)  
Washington, D.C. 20013
- Colonel H. Speed Wilson, USMC (Ret.)**  
Director, Full Gospel Business Men's  
Fellowship International (1400 Tracts in the  
U.S.A. and over 300 in Europe)  
Hot Springs, Virginia 24445
- Dr. Charles F. Woodhouse, M.D.F.I.C.S.**  
(The noted Orthopedics Surgeon)  
Clifton Forge, Virginia 24422

**W**e have acquired the 800 acre BATH ALUM ESTATE, truly one of the SHOWPLACES of Virginia. Surrounded on three sides by over 100,000 acres of the George Washington National Forest and on the fourth by a very large estate, it is an oasis, insulated from the outside world.

The completely furnished, 23 room Brick Colonial Manor House serves temporarily as our Club House and Lodge until the Main Club House is built. There is a Big Brick Barn, seating 500 or more in the loft, with a lower level for snack and liquor bars, and golfer's locker rooms. There are 5 Homes—3BR/3BA each, two Apartment Houses—4 units per House (each unit 2BR/2BA)—all of them on the Mountainside and reserved for Members' lodging until the new Club House is finished. The magnificent 18-hole Championship Golf Course is about 80% completed and should be playable soon.

We have two lakes, with the Lake of the Pines about 8 acres across, 30 feet deep, and full of Bass and Brim fish. We also have our own Trout Fish Hatchery. This, and the fact that we plan to raise our own cattle (beef), pigs (ham), and vegetables, should just about guarantee ruining your taste for meals anywhere else!

Our own AIRFIELD, 3700' by 150' is FAA and Virginia Dept. of Aeronautics approved and is one of the finest private airfields in the East. Just 4 miles away is Warm Springs Baths, widely known for their curative and therapeutic qualities, and 9 miles away is the world-famous Homestead, with 3 golf courses, 3 ski runs, 50 tennis courts, ice-skating, skeet shooting, etc.

For a limited time we are accepting applications for CHARTER MEMBERS for an Initiation Fee of \$125 with Annual Dues of only \$100. A CHARTER MEMBER's dues can never be raised and he gets a discount of 10% on all of his bills except his dues. When the CHARTER MEMBERSHIP drive is stopped, those joining as Regular Members will pay an Initiation Fee of \$500 with Annual Dues of \$300 and no discounts. (There may be an additional Virginia Sales Tax of 4%.) (The Initiation Fee will be waived to all graduates of the Air Force, Army, Naval Academies and to ROTC members who apply for Membership within 60 days after graduation.)

Charter Members will also have first choice of the 5-acre Lodgettes on the side of the Mountain for use as a Summer Home or Hunting Lodge when we open them up.

## THE NEW 34-STORY CLUB HOUSE

To be built soon after we get our approval from the County and State Authorities, the first 3 stories will be for Club facilities—dining rooms, bar, barber shop, card rooms, libraries, lounging rooms, etc. The next 20 floors will be 1 and 2 room suites for members, while the top 11 floors will consist of 100 3BR/BA apartments and a large conference room, to be rented to corporations by the year.

The top will have a roof garden and dining room with panoramic views.

## AVIATION GOLF and COUNTRY CLUB FARM

• Millboro,  
VIRGINIA  
24460

Please send me more information on your club, with special offer for Charter Membership

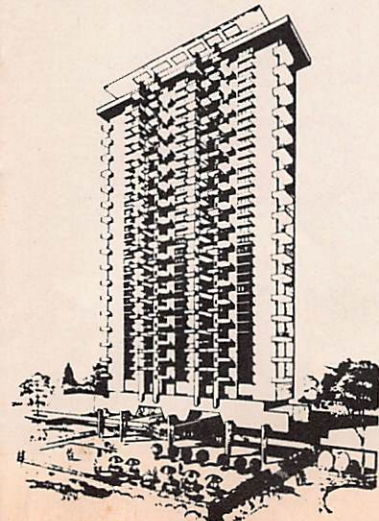
Name \_\_\_\_\_  
(please print)

Address \_\_\_\_\_  
(street)

\_\_\_\_\_  
(city, state, zip code)

If you enclosed \$200 with this coupon, that will pay your Initiation Fee and first year's dues as a Charter Member and save you \$25.

CIRCLE NO. 34 ON READER SERVICE CARD





# THE TIGER AS AN ENDANGERED SPECIES

*With the costs of ownership rising,  
there is hope for the return of a simple airplane  
that offers surprising performance.*



It's getting really tough. All the hard times we thought we'd faced have turned out to have been mere warm-ups. Aviation fuel is close to two dollars a gallon, when it's available. More and more airports have little if any service available. The waiting list for service of any kind (and we long ago started pulling oil changes and other simple things we once never would have soiled our hands on or spent our time doing) is now weeks long. Shop rates are up to \$30 an hour.

It's grim, and it looks as though it might get worse. But we have to fly; it's the only way we can do

what we have to do to survive. Beyond the need is the desire. Flying is both the tool and the reward.

But it costs so much. So does everything else, but we still have to cut back every way we can.

This big twin is a great bird and very sophisticated. It's also beginning to create the aura of conspicuous consumption as we roll along with just a couple of seats filled 90 percent of the time.

It has long legs—good endurance—but most of our trips are only 400 miles. The business is taking so much of my time that I can't stay as sharp as I should, and I'm feel-

ing pretty tired at the end of some of those approaches. If only we'd had that yaw damper installed.

The engines are getting a bit low on compression and the oil consumption is going up. And what about those higher temperatures on number two?

Face it. It's time to get a new airplane or lay this one up for a couple of months and spend 30 or 40 grand to get it back up to specs.

That kind of agony isn't very far in the future. For quite a few operators that moment may have passed already. Many operators of aircraft buy

continued

more than they need. Machismo has something to do with it; keeping up has something to do with it; buying the perfect or nearly best airplane for five percent of the missions has something to do with it. Whatever the justification, reason or drive behind the aircraft purchase decision of a couple of years ago, particularly for the individual or small company, the combined effects of inflation, operating costs and maintenance availability and costs probably will force a certain amount of trading down in the future.

Compromise may be necessary in our daily lives, but it isn't very pleasant. It certainly isn't very exciting. But if there is any single thing we can predict about our future, it most assuredly is that we shall have to compromise even more.

Accepting the need to compromise, wouldn't it be nice to find something that required the smallest possible sacrifice in the process?

If one were to approach the decision to purchase an airplane from an analytic basis, free of any emotion or ego, there are many factors one would have to study. Initial price, direct and indirect operating costs, maintainability, performance and

operational capability would be some of the key items on any list.

Given the average load and average stage length—and the realities of weather across most of the continental U. S.—any purportedly unbiased quest would have to include consideration of light single-engine aircraft, at least, if cost were an object.

One aircraft that would have to be part of the evaluation would be the Tiger. Its performance is as good as some of the light retractable-gear aircraft such as the Beech Sierra, Cessna Cutlass and the Piper Arrow, and its base price is lower. What's more, it is lower than most of its fixed-gear competition in price, higher than all but the Piper Archer in useful load and it outruns them all when it comes to all-around performance.

When one considers direct and indirect operating costs, the simple structure, fixed-pitch propeller and very simple, straightforward fixed gear (fibreglass mains and tubular nose) of the design should keep maintenance costs comparatively low.

Relatively low initial cost, good useful load (1048 pounds) and a turn of speed (129 knots at 65 percent power) that exceeds that of some

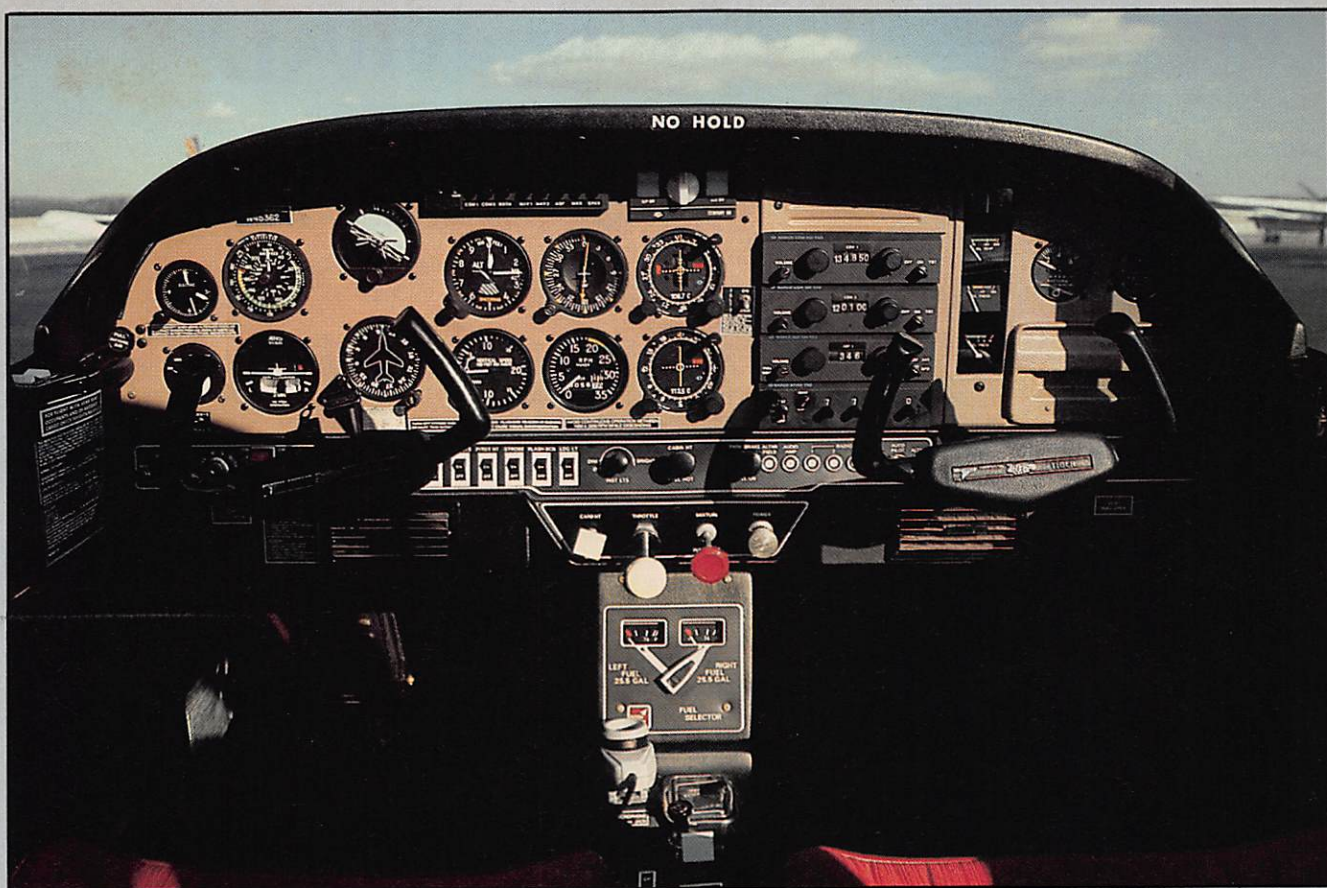
retractables would seem to define an airplane with strong competitive arguments—strong enough to carve a substantial place for itself in the general aviation marketplace. Add systems simplicity and apparent low maintenance costs, and any marketer should have a winner.

The Tiger hasn't done too badly in its five-year production history. Average units have exceeded 230 per year, which is not bad for a development of a quasi-homebuilt peoples' airplane, Jim Bede's two-place design that was certified as the Yankee. The sales success is even more remarkable when the checkered development and ownership of the design is considered.

From the practical point of view, the Tiger represents an excellent example of what can be accomplished with the simple, basic approach. Which is not to say that it is not sophisticated. It utilizes a tubular spar capable of seven G's (the overall structure is stressed to +3.8 G's in the normal category and 4.4 in the utility category). Much of the fuselage is honeycomb structure; the rest is rivet-free, bonded construction. The design achieves strength, production efficiencies at high volume and aero-

## THE TIGER





dynamic improvement over conventional construction methods.

It also can produce problems, as reportedly developed when one adhesive producer changed its product without informing the aircraft manufacturer. Skin bonds did not hold; some delamination occurred, much to the consternation of pilots. The episode helped add to questions of the reliability of a construction method that was different from the accepted "drill and rivet" process.

If one looks solely at numbers, without a depiction of the airplane (fixed-pitch propeller, fixed and simple landing gear and all the other peculiarities of the design) it would be a most impressive airplane. If one considers all of the seemingly unsophisticated features of it, it is an astoundingly impressive airplane. Yet number and design calculations aside, prudence and practicality aside, the Tiger is still a remarkable airplane.

Some pilots (and more passengers) might complain about entering through the sliding canopy instead of a door; but, once seated they can see that the Tiger offers comparable space to its competitors.

Everything else about preflight and

preparation is very straightforward. The top-hinged engine cowl halves make inspection unforgivably easy during preflight. There are no peculiarities about the airplane, except when it comes time to start the engine. Recommended procedure is to start on the left magneto, switching to the both position after the engine is running. Aside from this, everything is familiar to the transitioning pilot.

The free-swiveling (remember: simple and low maintenance) nose gear might cause some consternation to newly acquainted pilots; but it permits higher than average maneuverability on the ground. Some initial difficulty might be encountered while taxiing in a crosswind, since the airplane tends to weathervane like a conventionally geared one; but the required effort is low, and one quickly learns the knack.

The free-castering nosewheel presents no problem during the take-off roll, since the rudder becomes effective at relatively low speeds. Directional control is quite precise; in fact, it is too precise to pilots accustomed to other aircraft. They have difficulty as a result of overcontrolling, or too much input, rather than from a lack

of control effectiveness.

The elevator is highly effective. Using the recommended rotation speed of 55 KIAS, acceleration to the best climb speed of 90 KIAS is quickly achieved. A rate of climb close to 1000 fpm was normal during our flights with the evaluation aircraft.

In both slow and normal flight, control response and the harmony among the controls is good: light, responsive and well balanced.

Pitch control and trim during cruise and approach is adequate. Stalls are unruffled and are preceded by fair warning. Elevator power is particularly noticeable during the flare. A variety of approach speeds and attitudes were all resolved in the flare. The nose could be lifted below flying speed, even with loading toward forward cg.

The particular Tiger we flew, N45362, was plagued with a succession of airworthiness directives, service bulletins and problems uncovered during maintenance. These kept us from several planned cross-country flights to sample the performance and comfort of the design. So most of our time in the airplane was spent in the less-desirable phases: a series of take-

continued

# THE TIGER

offs and landings and a variety of ever-changing attitudes and power settings as several pilots put the airplane through their particular checks.

But, to get back to where we started (and factoring in a fair amount of experience with other Tigers and predecessor models, the airplane is a good performer—efficient, simple and competitive with aircraft outside of its category.

It has suffered a variety of owners. If it had been part of the product line of an established, secure manufacturer, it undoubtedly would have succeeded even better than it has.

Frankly, we hope it survives its latest trauma. Because when the combination of initial and operating costs begin to creep up, airplanes that do more than they appear to be capable of—and the Tiger certainly fills that description—are good to have around.—EGT

## Gulfstream American Tiger AA-5B

Basic price \$37,000

Price as tested \$49,665

### Specifications

Engine	Avco Lycoming O-360-A4K 180 hp @ 2700 rpm TBO 2000 hr
Propeller	McCauley two blade, fixed pitch, 75 in
Wing span	31 ft 6 in
Length	22 ft
Height	7 ft 7 in
Wing area	140 sq ft
Wing loading	17.1 lb/sq ft
Power loading	13.3 lb/hp
Passengers and crew	4
Cabin length	9 ft 7 in
Cabin width	3 ft 4 in
Cabin height	3 ft 10 in
Empty weight	1398 lb
Equipped empty weight (as tested)	1477 lb
Useful load (basic aircraft)	1002 lb
Useful load (as tested)	930 lb
Payload with full fuel (basic aircraft)	680 lb
Payload with full fuel (as tested)	616 lb
Gross weight	2400 lb
Fuel capacity (standard)	53.6 gal (52.4 usable)
Oil capacity	8 qt
Baggage capacity	120 lb

### Performance

Takeoff distance (ground roll)	865 ft
Takeoff over 50 ft	1550 ft
Rate of climb (gross weight, sea level)	850 fpm
Maximum level speed (sea level)	148 kt
Cruise speed (75% power, 8500 ft)	139 kt
Cruise speed (65% power, 9000 ft)	131 kt
Range at 75% cruise (with 45-min reserve)	554 nm
Range at 65% cruise (with 45-min reserve)	574 nm
Service ceiling	13,800 ft
Stall speed (clean)	56 kt
Stall speed (gear and flaps down)	53 kt
Landing distance (ground roll)	410 ft
Landing over 50 ft	1120 ft

# SURVIVAL AFTER SAVANNAH

After it was unleashed seven years ago, the Tiger clawed a sizable niche for itself in the four-place, single-engine segment of the general aviation aircraft marketplace.

Those associated with the Tiger through its brief history are quick to point out that many more sophisticated singles also were covered by the Tiger's speed and handling characteristics and that it was through no fault of its own that production of the Tiger was suspended last December.

The Tiger descended from the BD-1, a bonded two-seat airplane designed by James Bede in 1962. The BD-1's wings and horizontal tail components were interchangeable; and, although the wings could be removed to permit the aircraft to be towed behind an automobile, the BD-1 was stressed to 9.2 G's.

The BD-1's early descendants became common tools for pilot training, but Bede says he did not envision the airplane as a trainer. "There was a Cessna 150 and a Colt at the time, and Piper was coming along with the Cherokee 140," he said. "What was lacking was a good little sport plane. I felt that once a fellow got a private pilot license, he didn't want to continue flying his trainer, he wanted to move up to something a little bit snappier."

Bede flew the first BD-1 prototype in 1963 and logged about 180 hours in the aircraft before selling the design rights to American Aviation Corporation a year later. Bede says he served as a consultant to American Aviation until 1965 when he formed World Flight Inc. (later called Bede Aircraft Corporation) to build the BD-4.

American Aviation obtained a type certificate for the BD-1 design as the Yankee and began production in 1968 at its plant in Cleveland, Ohio.

American later modified the Yankee's wing to provide more docile stall characteristics and introduced the Trainer and the TR-2. The company's first attempt at a four-place aircraft was the AA-2 Patriot. "It was really tragic," Bede recalled. "It was big, it was slow and it was a dog."

American scrapped the AA-2 program in favor of the 150-hp AA-5 Traveler, which first flew in 1970.

"The only comparison between the AA-2 and the Traveler was that they had three wheels and four seats," Bede said.

Grumman Corporation acquired American Aviation in 1974. The plant was moved at great expense from Cleveland to Savannah, Ga., and was dubbed Grumman American. The lightplane line received a cool reception when it was moved into facilities already engaged in the production of Grumman's Gulfstream business jets.

"We had growth pains internally in trying to make the small airplanes in the same plant in which we were making the Gulfstream," said Roy Garrison, who headed marketing for the lightplanes through most of their history. (Garrison now is commuter aircraft sales manager for Cessna Aircraft.)

"I don't think you could say there was a conflict," he said. "But, you get a guy who's building airplanes like the Gulfstream II and III—he thinks small airplanes are toys.

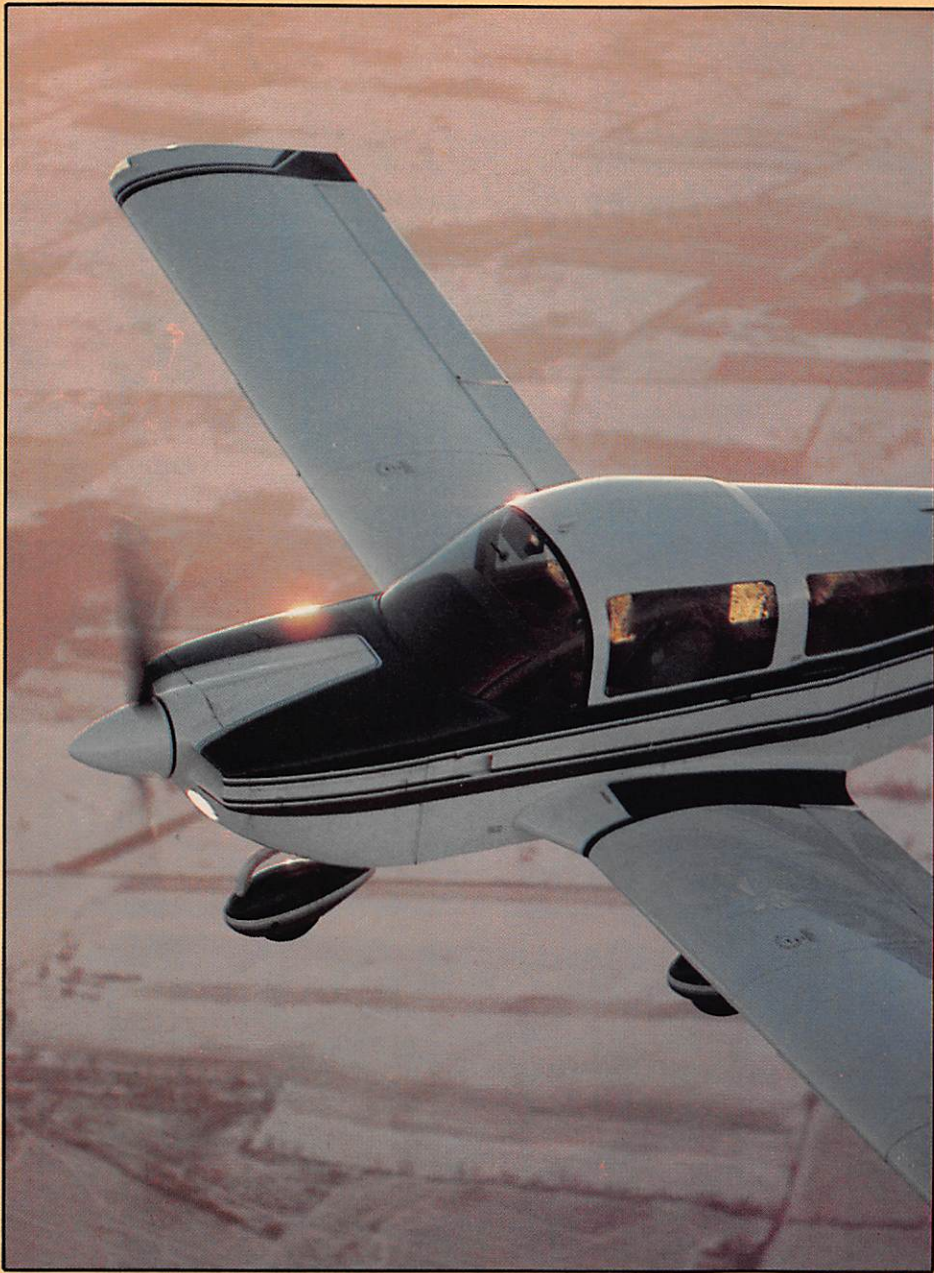
"It's kind of like trying to make the Pinto on the Cadillac line," Garrison said. "I think it would have been better had the two manufacturing facilities and organizations been kept completely apart."

Grumman American introduced the Tiger in 1974. Roy Lopresti, who developed the Mooney 201 and 231, played a major role in the introduction of the Tiger.

"The Tiger is basically a Traveler, cleaned up and with horsepower raised to 180," Lopresti said. "The change from the Traveler to the Tiger was remarkably free of problems.

"The older Traveler tail was an adaptation of parts taken from the Yankee, with some scabbed-on pieces to make a small tail do the job," he said. "The Traveler was very sensitive in the pitch plane, so we put what we thought was a better horizontal tail on the Tiger to help the flying characteristics.

"Drag reduction came from reduced cooling drag internally, better cowling shape externally, plus some attention to fillets and fairings on the landing gear," he said. Lopresti, who left Grumman American to join Mooney Aircraft shortly before the Tiger was certificated, said the aircraft was a delight to



fly. "The control harmony is good, and the control forces are relatively light," he said.

"It's an easy airplane to build and maintain, because there are very few parts in the airplane. I think the Grumman airplane probably has about one-fifth the parts that a Mooney airplane has.

"The bonding technique in production forces a very simple design philosophy on the engineers," Lopresti said. He explained that blocks have to be inserted within the Tiger's structures while applying pressure to bond the skins. The structures have to be of simple design in order to be able to remove the blocks after the process is completed.

"The bonding works very nicely,"

Lopresti said. "The people who were there with Grumman American had kind of grown up with the airplane and with the basic bonding technique. That wealth of experience is now sprinkled around the country. It's going to be difficult to corral the right kind of technical talent and get it all going again, because people who understand bonding in the lightplane business are really kind of few and far between."

In 1978, Grumman Corporation sold Grumman American and the Gulfstream jet line to American Jet Industries (AJI), a company that specialized in modifying older transport aircraft.

However, AJI, which later changed its name to Gulfstream American, had a pet project: a business airplane with a

turboprop engine in the nose and a turbojet engine in the tail, called the Hustler. AJI conceded that it acquired Grumman American primarily to gain production facilities for the Hustler.

As Gulfstream American, the firm stopped building its two-place aircraft, the Lynx and the T-Cat, a few months after acquiring the Savannah facilities, and suspended production of the Tiger, Cheetah and twin-engine Cougar last December. The company simply stated that it believed production of lightplanes was incompatible with its plans for the Gulfstream III and the Hustler.

In January, Gulfstream American announced it was negotiating with International Transport and Earthmoving Equipment Company (ITE) to resume production of the lightplanes in Northern Ireland. ITE is part of the Zwaans Group, an international conglomerate based in Monte Carlo.

Asked if there would be any foreseeable problem in finding qualified people to build the Tiger in Northern Ireland, Alan Lemlein, executive vice president of Gulfstream American, confidently said, "If we can train them here, we can train them there."

ITE aviation division, Southair International, has purchased Gulfstream American's inventory of 214 Tigers and Cheetahs. Southair said it had found a dealer that would sell most of the aircraft in Europe.

Southair's acquisition of Gulfstream American's inventory leaves few new Tigers available for purchase in the United States. Tigers already in the domestic fleet virtually have been grounded recently by a rash of airworthiness directives and service bulletins. Of note is an AD issued by FAA's Southern Region last summer, which originally had ordered owners of Tigers to have an inch cut off of the trailing edges of the ailerons on their aircraft.

FAA said it issued the AD after receiving 33 reports of aileron oscillations. After meeting with Tiger dealers and owners who presented data showing that the oscillation problem was caused by normal wear and tear and could be solved through routine maintenance, the Southern Region admitted it may have over reacted to the problem. The airworthiness directive was revised to require inspections at 100-hour intervals to damage or wear and proper rigging of aileron components, and corrections if necessary.

Despite its somewhat irregular history, those who have been involved in the development and production of the Tiger agree that it is a good airplane that could continue to fare well in the marketplace if brought back into production.—MML

# SKYHAWK

**Skyhawk: the world's most popular airplane and sales leader in  
The World's Number 1 Business Airline.**



**“Since this was our first airplane, we looked around carefully for the best buy. Skyhawk and Warrior looked pretty even... until I looked at the price.”**

**Dan Nelson**  
Hans Nelson & Sons Nursery  
Boring, Oregon

When nursery owner Dan Nelson in Oregon needed an economical way to grow more business, he joined the fleet of The World's Number 1 Business Airline in a new Cessna Skyhawk.

Skyhawk gives Dan and thousands of other businessmen/pilots the versatility and range they need to get more done in less time. And do it economically.

Skyhawk's efficient 160 hp engine cruises at a brisk 140 mph (close to three times the national speed limit) and uses only 8.4 gallons of fuel per hour. Yet Skyhawk climbs faster, takes off in fewer feet and flies higher than its nearest competitor. Cessna's exclusive Blue Ribbon Protection Plan also protects its engine right up to its 2,000-hour TBO.

To Dan Nelson, that kind of performance and low operating cost point to value. The value of transportation he can depend on and schedule himself, and the value of seeing more customers in a typical business day... and adding more to his bottom line.

The 1980 Skyhawk. When you look at its economy, easy maintainability, reliability and performance, it's easy to see why it's the world's most popular airplane. And why more business travelers than ever are flying The World's Number 1 Business Airline.

**FLY CESSNA**  
*The World's Number 1 Business Airline*

Cessna has more than one answer to your transportation needs. For more information on the Skyhawk or any Cessna aircraft, contact your nearest Cessna dealer or write: Cessna Aircraft Company, Dept. 103FX, Wichita, Kansas, 67201, U.S.A.

Name \_\_\_\_\_  
Address \_\_\_\_\_  
City \_\_\_\_\_  
State \_\_\_\_\_ Zip \_\_\_\_\_  
Company \_\_\_\_\_  
Position \_\_\_\_\_  
Phone \_\_\_\_\_

